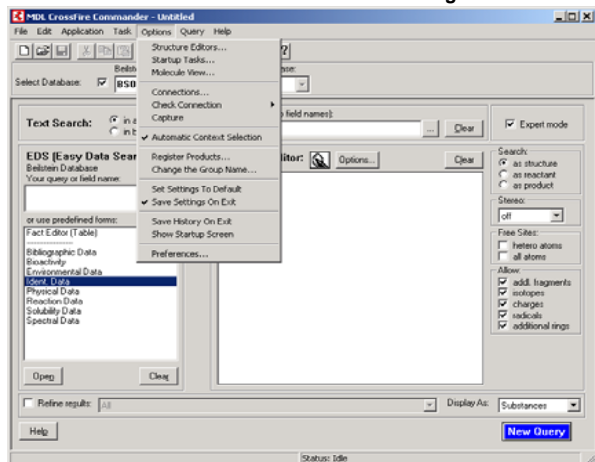


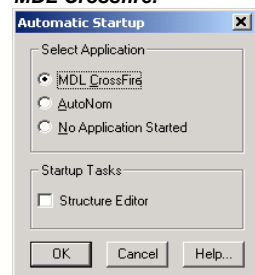
MDL Crossfire Connection and Preference Information

1/8/2004

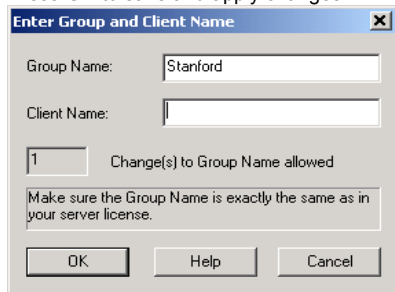
1. Go to **Options** menu bar. Uncheck all items except for **Automatic Context Selection** and **Save Settings On Exit**.



2. Choose **Start Up Tasks** and select **MDL Crossfire**.



3. Make sure that **Group Name** is **Stanford** (with a capital S). Leave **Client Name** empty. Press **OK** to save and apply changes.

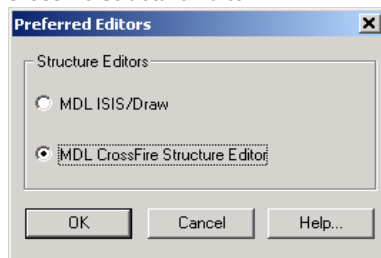


Options Menu Bar Settings

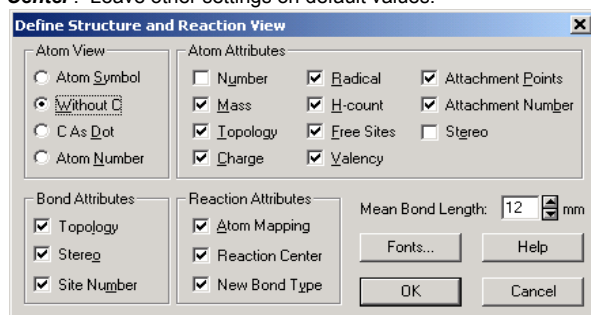
- # 1-3 Server connection settings
- # 4-5 Structure & Reaction Preferences
- # 6 Starting a Session
- # 7-8 Trouble-shooting Tips


MDL Crossfire is not available off-campus.

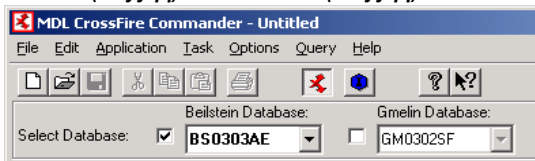
4. Choose **Structure Editors**. Select **MDL Crossfire Structure Editor**.



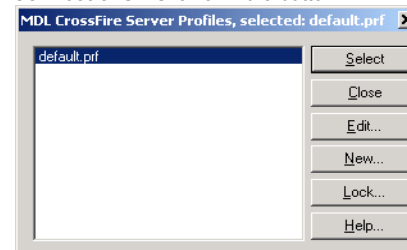
5. Optional: Change **Atom View** as desired. Check **Reaction Center**. Leave other settings on default values.



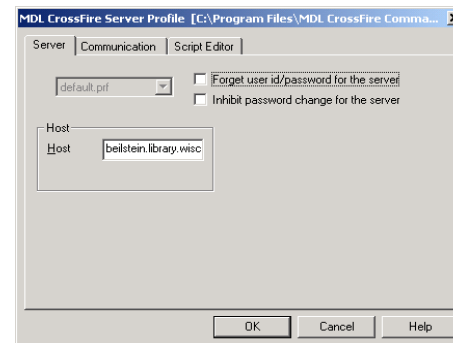
6. Click on  to connect to the Crossfire server. If you have connected successfully, you see **Select Database** in the upper left corner with an option to choose the **Beilstein (BSyyqq)** and/or **Gmelin (GMyyqq)** databases.



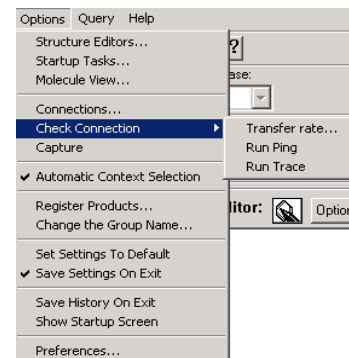
7. Trouble-shooting: Verify **Host Name** is entered correctly. From **Options** menu bar, choose **Connections**. Click on **Edit** button.



Then on **Server** tab, make sure **Host Name** is **minerva.library.wisc.edu**



8. Trouble-shooting: Make sure server is running. Choose **Check Connection** and then **Run Ping**.



For more help, contact graceb@stanford.edu